

# AIRFLOW CONTROL - VAV AND CAV

☐ Product selection A-Z



Filter list

- [Available online](#)
- [In Stock](#)

## A

Adjustment devices

AK

AK-EX

AKK

## B

BC0 - Volume Flow MP-BUS

BC0 - Volume Flow MP-BUS

BE-LCD

BM0 - Volume Flow MP/MODBUS/BACNET

BM0 - Volume Flow MP/MODBUS/BACNET

BM0-J6 - Volume flow MP/Modbus/BACnet, RJ12

BM0-J6 - Volume flow MP/Modbus/BACnet, RJ12

BUDN - Volume flow MP/Modbus/BACnet

BUDNF - Volume flow spring return MP/Modbus/BACnet

BUPN - duct pressure MP/Modbus/BACnet

BUPNF - Duct pressure  
spring return  
MP/Modbus/BACnet

---

BURN -  
MP/Modbus/BACnet

---

BURNF - Room pressure  
spring return  
MP/Modbus/BACnet

---

BUSN - Volume flow  
MP/Modbus/BACnet

---

BUSNF - Volume flow  
spring return  
MP/Modbus/BACnet

---

BUSS - Volume flow fast-  
running  
MP/Modbus/BACnet

---

## C

---

CAH

---

CAK

---

CF

---

Control component  
VARYCONTROL - Easy

---

## D

---

Dynamic differential  
pressure transducers

---

## E

---

EL-UK

---

EM-AUTOZERO

---

EM-BAC-MOD

---

EM-IP

---

EM-TRF

---

EM-TRF-USV

---

EN

---

## L

---

LK0 - Volume Flow  
SIEMENS GLB with KNX

---

LK0 - Volume Flow  
SIEMENS GLB with KNX

---

LNO - Volume flow  
Siemens GLB

---

LNO - Volume flow  
Siemens GLB

---

## M

---

Mains transformer

---

Min/Max actuators

---

## O

---

Open/Close actuators

---

## R

---

RC

---

RETROFIT

---

Retrofit kits

---

RN Series CAV Units [▶](#)

---

## S

---

SB0N

---

SB0S

---

SFTB

---

Static differential  
pressure transducers

---

## T

---

TA-Silenzio

---

TROX UNIVERSAL

---

TS

---

TSFB

---

TVA

---

TVE Series VAV units [📄](#)

---

TVE-Q

---

TVJ

---

TVLK

---

TVM

---

TVR

---

TVRK

---

TVT

---

TVZ

---

TX

---

TZ-Silenzio

---

## V

---

Variable Actuators

---

VFC

---

VFL

---

VFR

---

VME

---

VMLK

---

VMR

---

VMRK

---

## W

---

WL

---

WT

---

## X

---

XB0 - Volume flow

---

XB0 - Volume flow

---

XB4 - Volume flow spring  
return

---

XD0 - Volume flow

---

XD4 - Volume flow spring  
return

---

XF0 - Channel pressure

---

XF4 - Duct pressure  
spring return

---

XM0 - Volume flow  
MODBUS

---

XM0 - Volume flow  
MODBUS

---

XM0-J6 - Volume Current  
MODBUS, RJ12

---

XM0-J6 - Volume Current  
MODBUS, RJ12

---

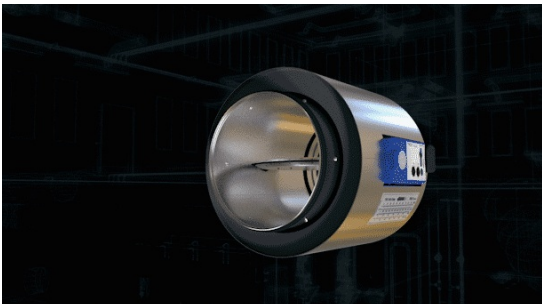
XS0 - Volume flow  
MODBUS

---

XS0-J6 - Volume flow  
MODBUS, RJ12

---

## CAN A DAMPER BLADE PROVIDE MEASUREMENT AND REGULATE?



**YES! IT'S CALLED TVE.**

With the new volume flow controller of Type TVE, upstream conditions, installation dependent on airflow direction and strictly limited volume flow rate control ranges are a thing of the past.

## CONTROL UNITS

How much air do you need?

Ventilation and air conditioning systems are called upon to adjust indoor air quality and the conditions for heating comfort and humidity in a room so as to comply with established stipulations (DIN EN 13779).

The priority of this observation is the indoor climate. To maintain the necessary air quality and enable economical operation of the system, all air flows of a system must be monitored and controlled. The air-distribution equipment is thus given an important task.

TROX is one of the world's leading manufacturers of these units. Our international success is based on 35 years of development and production experience of volume flow terminal units and related components.

## SIMPLE. PRECISE. EFFICIENT.



Three optimised TROX control units distinguish themselves by their outstanding quality, easy commissioning and precise function.

For more information just go to [Special Leaflet](#) or visit our product pages.

## DESIGN MANUAL AIRFLOWCONTROL



Physical Principles, Standard Notes, system overviews, and more help you plan the right control engineering.

## TROX SERVICES



**PRODUCT SEARCH A-Z**  
Find out quickly and  
easily.



**TROX EASY PRODUCT FINDER**  
Fast. Reliable. Innovative.



**CONTACT US**  
For further  
information