

# SMOKE CONTROL DAMPERS

## EK-JZ SMOKE CONTROL DAMPER: UNIVERSAL. MODULAR. SAFE.



Smoke control dampers with the largest possible openings are required to keep escape and rescue routes smoke-free.

This is the only way to achieve large volume flow rates at low airflow velocities – a prerequisite for the effective functioning of pressure differential systems (DBA).

[Go to EK-JZ product page: configure and order online](#)

## FIRE AND SMOKE PROTECTION DAMPERS - QUICK SELECTION GUIDE

**Fire Dampers**

**CE**

Product Standard: BS EN 15650  
EXAP Standard: BS EN 15680-2  
Classification Standard: BS EN 13501-3  
Test Standard: BS EN 13502-2

Includes:  
Fire damper = Mechanical spring close damper with thermal link  
MSFD = motorised smoke leakage rated fire damper with integrated electrical thermal release

**FKA2-EU**  
DOPFKA2-EU/DE/022

Sizes 200x200 - 1500x800  
S = W < 800 x H < 400  
L = W > 800 x H > 400

FD MSFD

Installation Type	Fire Stop method Min wall thickness = d	Size		Mortar		Installation Kit		Fire Ball System		All
		S	L	S	L	S	L	S	L	
<b>WALL - SOLID</b>	gross density kg/m³ ≥ 350									
In wall		80	EI 90 S	EI 90 S						
In wall		100	EI 120 S	EI 120 S				EI 120 S	EI 90 S	
In Shared opening								EI 90 S	EI 90 S	
In Shared opening	Mixed types 2 each total area ≤ 1.2 m²	100	EI 90 S	EI 90 S						
In Shared opening	multiple dampers total Area ≤ 4.8m²	100	EI 90 S	EI 90 S						
In Shared opening	multiple dampers total Area ≤ 2.4m²	100						EI 90 S	EI 90 S	
In Shared opening	multiple dampers total Area ≤ 1.2m²	100								
In Shared opening	2x2 total Area ≤ 4.8m² + insulation	100	EI 120 S	EI 120 S						
In wall	In corner up to wall & ceiling	100	EI 90 S	EI 90 S						
In Shared opening	2 In corner up to wall & ceiling	100	EI 90 S	EI 90 S						
Away from	On face wall or remote from	100				EI 90 S	EI 90 S			
	Below deflection head joint	100								
In Shared opening	With kit Below deflection head joint	100								
	2 dampers flange 2 flange as above	100								

Our poster shows the full range at a glance. Use this detailed, but straight forward, decision-making tool to help plan your project.

All TROX CE-certified fire dampers and smoke control dampers are listed according to:

- Damper model
- Application
- Classification according to structure type, installation location and fire stopping execution/material:
  - Solid or partition wall
    - Partition wall with metal or timber studding
    - Shaft wall with or without metal studding
    - CLT or solid timber
  - Concrete floor, solid wood floor or wood beam floor

Solutions for:

- Deflection heads
- Low density aircrete ≥350 kg/m³, hollowcore flooring, reinforced ribbed ceilings and more

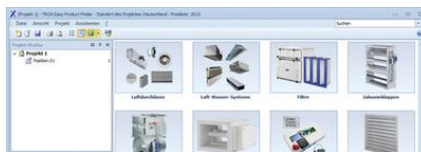
- Sandwich panel walls
- Arrays
- Narrow gaps to structures
- Multi-service penetrations - fire dampers + cables + pipes in shared opening
- Easy conversion from fire damper to MSFD and vice versa
- Wall thicknesses starting at 40mm
- ATEX certified models - certification even for fusible link options

## TROX SERVICES



### PRODUCT SEARCH A-Z

Find out quickly and easily.



### TROX EASY PRODUCT FINDER

Fast. Reliable. Innovative.



### CONTACT US

For further information