

SMOKE CONTROL DAMPERS

EK-JZ SMOKE CONTROL DAMPER: UNIVERSAL. MODULAR. SAFE.





Smoke control dampers with the largest possible openings are required to keep escape and rescue routes smoke-free.

This is the only way to achieve large volume flow rates at low airflow velocities – a prerequisite for the effective functioning of pressure differential systems (DBA).

[Go to EK-JZ product page: configure and order online](#)

FIRE AND SMOKE PROTECTION DAMPERS - QUICK SELECTION GUIDE

Fire Dampers  Product Standard: BS EN 15650 EXAP Standard: BS EN 15680-2 Classification Standard: BS EN 13501-3 Test Standard: BS EN 13505-2		FKA2-EU DAMPFKA2-EU/DE/022  Includes: Fire damper = Mechanical spring close damper with thermal link MSFD = motorised smoke leakage rated fire damper with integrated electrical thermal release		Size 200x200 - 1500x800 S = W < 800 x H < 400 L = W > 800 x H > 400	
Installation Type		Fire Stop method		Min wall thickness = d	
WALL - SOLID		gross density kg/m³ ≥ 350			
In wall		80	EI 90 S	EI 90 S	
In wall		100	EI 120 S	EI 120 S	
In Shared opening		100	EI 120 S	EI 120 S	
In Shared opening	Mixed types 2 each total area ≤ 1.2 m²	100	EI 90 S	EI 90 S	
In Shared opening	multiple dampers total Area ≤ 4.8m²	100	EI 90 S	EI 90 S	
In Shared opening	multiple dampers total Area ≤ 2.4m²	100			EI 90 S EI 90 S
In Shared opening	multiple dampers total Area ≤ 1.2m²	100			
In Shared opening	2x2 total Area ≤ 4.8m² + insulation	100	EI 120 S	EI 120 S	
In wall	2 In corner up to wall & ceiling	100	EI 90 S	EI 90 S	
In Shared opening	2 In corner up to wall & ceiling	100	EI 90 S	EI 90 S	
Away from	On face wall or remote from	100			EI 90 S EI 90 S
	Below deflection head joint	100			
In Shared opening	With kit Below deflection head joint	100			
	2 dampers flange 2 flange as above	100			

Our poster shows the full range at a glance. Use this detailed, but straight forward, decision-making tool to help plan your project.

All TROX CE-certified fire dampers and smoke control dampers are listed according to:

- Damper model
- Application
- Classification according to structure type, installation location and fire stopping execution/material:
 - Solid or partition wall
 - Partition wall with metal or timber studding
 - Shaft wall with or without metal studding
 - CLT or solid timber
 - Concrete floor, solid wood floor or wood beam floor

Solutions for:

- Deflection heads
- Low density aircrete ≥350 kg/m³, hollowcore flooring, reinforced ribbed ceilings and more

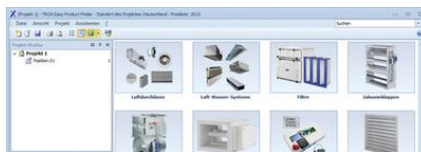
- Sandwich panel walls
- Arrays
- Narrow gaps to structures
- Multi-service penetrations - fire dampers + cables + pipes in shared opening
- Easy conversion from fire damper to MSFD and vice versa
- Wall thicknesses starting at 40mm
- ATEX certified models - certification even for fusible link options

TROX SERVICES



PRODUCT SEARCH A-Z

Find out quickly and easily.



TROX EASY PRODUCT FINDER

Fast. Reliable. Innovative.



CONTACT US

For further information