

Product Information Update

Subject: Fan Selection on SFTB Boxes

Date: October 2006

Applicability: 5/2.1/B/3

Ref: PIU 1/4/523

PIU Issued: YES NO

The maximum Total Fan Volume shown on page 6 of leaflet 5/2.1/B/3 for a code 1 fan in the SIZE 210 SFTB-E and the SIZE 210 SFTB-1 is to be reduced to 200 l/s. This applies to the ESP of 30, 40 and 50 Pa given in the leaflet.

This is to optimise the selection of code 2 fans and remove some confusion in the selection process.



C A Palfrey
Associate Technical Director

Product Information Update

Subject: TSFB Silencer for SFTB Boxes

Date: October 2006

Applicability: Leaflet 5/2.1/B/3 SFTB

Ref: PIU 1/4/524

PIU Issued: YES NO

The attached dimensional data sheets have been updated to include sizes 211 and 311.

TSFB-00 Issue 510/04/02

TSFB-D1 Issue 210/04/02

The new sizes allow a longer silencer to be specified, for example NR30 areas.



C A Palfrey
Associate Technical Director

Trox (UK) Limited

GB-Thetford Norfolk IP24 3SQ
 Telephone 01842/754545
 Telefax: 01842/763051

TROX[®] TECHNIK

Product Information

Silencer for Fan Series VAV Terminal Box
 Type TSFB - ** - *** - D1 / *** / 0 / ****

ORDER CODE DETAILS:-

TSFB - ** - *** - D1 / *** / 0 / ****

TYPE →

PERF PLATE LINING
 - LB = WITH (FITTED) or
 BLANK = NOT REQUIRED

FLOW GRID
 - VGR = WITH (FITTED)
 CONNECTIONS AS SHOWN
 - VGL = WITH (FITTED)
 CONNECTIONS OPP. SIDE
 BLANK = NOT REQUIRED

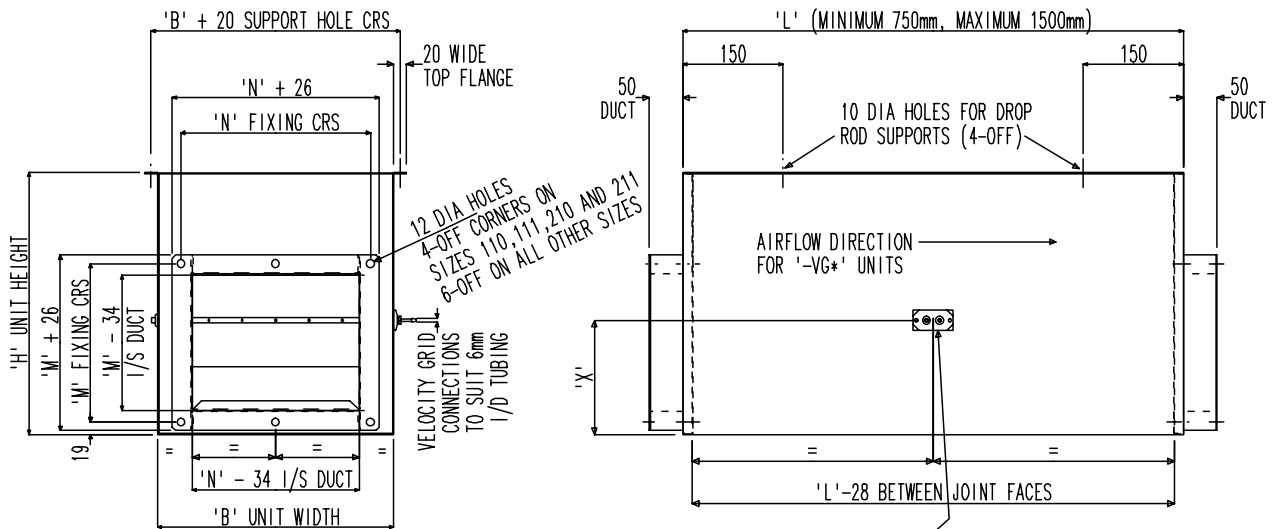
UNIT SIZE
 110
 210
 310
 410

NOT USED

SPECIAL LENGTH 'L' IN mm (Via EAF) or
 BLANK = STANDARD LENGTH

ADDITIONAL DUCTS
 SUPPLIED FITTED

SPECIFICATION:-
 TSFB MANUFACTURED FROM 1mm THK GALVANISED MILD STEEL SHEET WITH INTERNAL MINERAL WOOL LINING TOP AND BOTTOM AND INTERNAL CLASS '0' FOAM LINING FITTED TO SIDES. GALVANILSED PERFORATED MILD STEEL SHEET IS USED TO COVER MINERAL WOOL LINING WHEN OPTION -LB IS SPECIFIED IN ORDER CODE.



SIZE	'L'	'B'	'H'	'N'	'M'	'X'
110	750	354	392	284	239	170
210	1000	454	402	384	288	175
310	1200	554	402	484	339	"
410	1500	704	452	634	390	188

VELOCITY GRID FITTED CENTRALLY ON LENGTH WHEN OPTION -VGR OR -VGL IS SPECIFIED IN ORDER CODE. 'R' AN 'L' REFERS TO HANDING ON GRID CONNECTIONS, RIGHT HAND OPTION SHOWN ABOVE, LEFT HAND OPTION HAS GRID CONNECTIONS ON OPPOSITE SIDE

All rights reserved © Trox (UK) Limited. Design changes reserved.

Product Information Update

Subject: New Belimo Compact LMV-D2-MP

Date: November 2006

Applicability: 5/2.1/B/3 SFTB

Ref: PIU 1/4/529

PIU Issued: YES NO

From week 45 SFTB boxes produced in the UK will incorporate the new Belimo controller/actuator type LMV-D2-MP for the control code BCO. Training will be arranged on request but the control features remain basically the same as the previous Compact. Details of the new controller are available on the Belimo web site. The TROX version LMV-D2-MP...TR will be coloured blue rather than Belimo orange. When used in conjunction with the Belimo Temperature Controller type CR24... the mode setting is to be 2 to 10VDC (E2). For all other situations the mode setting as standard remains as E0. The price for BCO control option remains unchanged.

C A Palfrey



Associate Technical Director