

Product Information Update

Subject: Dimensional Data Sheet
For Cylindrical Attenuators

Date: September 1999

Applicability: 6/2.1/B/1
CD and CDP Attenuators

Ref: PIU 1/3/365

Please find attached the dimensional data sheets for CD and CDP cylindrical attenuators, ref. Issue 1 – 01/09/099. Standard construction pre galvanised mild steel.



C A Palfrey
Associate Technical Director

Trox (UK) Limited

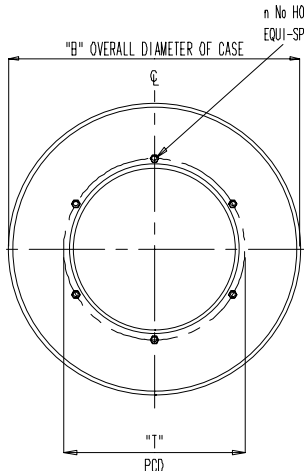
GB-Thetford Norfolk IP24 3SQ
 Telephone 01842/754545
 Telefax: 01842/763051

TROX[®] TECHNIK

Product Information
 CD CYLINDRICAL ATTENUATOR.

STORED AS H:\EDD\DATANEW\CDATTENU. All rights reserved © Trox (UK) Limited. Design changes reserved.

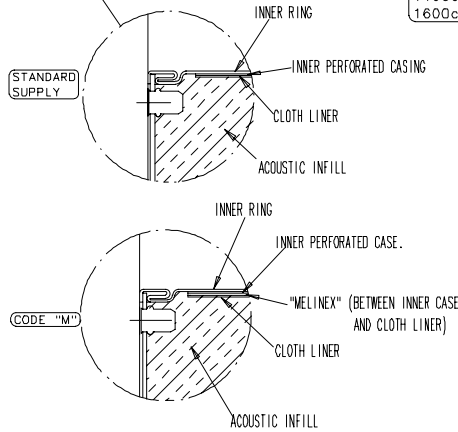
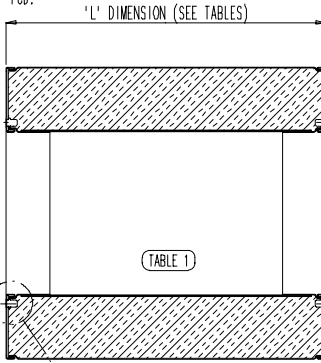
FILE NAME H:\EDD\DATANEW\CDATTENU



UNIT SIZE	"T" "	"n" "
250c	283	6
280c	317	8
300	329	8
315c	352	8
350	378	8
355c	392	8
400c	438	8
450c	488	8
500c	538	8
550	590	12
560c	600	12
600	640	12
630c	670	12
650	690	12
700	740	12
710c	750	12
750	790	12
800c	840	16
850	890	16
900c	940	16
950	990	16
1000c	1041	16
1100	1150	16
1120c	1169	24
1200	1270	24
1250c	1299	24
1400c	1449	24
1600c	1649	24

STANDARD SIZES SUFFIX 'c'
 ARE DIN 24 154 TEL 1

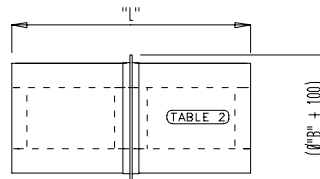
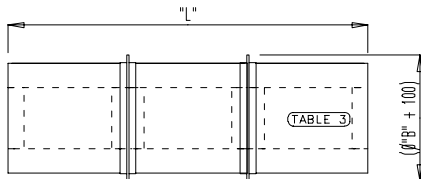
n No HOLES X MR
 EQUI-SPACED ON "T" PCD.



UNIT SIZE	OVERALL LENGTH "L"				
	Ø"B"	1D	1.5D	2D	3D
250c	456	250	375	500	750
280c	488	280	420	560	840
300	502	300	450	600	900
315c	522	300	450	600	900
350	552	350	525	700	1050
355c	561	350	525	700	1050
400c	604	400	600	800	1200
450c	653	450	675	900	1350
500c	707	500	750	1000	1500
550	752	550	825	1100	1650
560c	764	550	825	1100	1650
600	802	600	900	1200	1800
630c	838	600	900	1200	1800
650	852	650	975	1300	1950
700	902	700	1050	1400	
710c	915	700	1050	1400	
750	952	750	1125	1500	
800c	1001	800	1200	1600	
850	1052	850	1275	1700	
900c	1098	900	1350	1800	
950	1152	950	1425	1900	
1000c	1207	1000	1500	2000	
1100	1302	1100	1650		
1120c	1330	1100	1650		
1200	1402	1200	1800		
1250c	1467	1250	1875		
1400c	1621	1400			
1600c	1793	1600			

UNIT SIZE	Ø"B"	OVERALL LENGTH "L"
1400c	1621	4200
1600c	1793	4800

UNIT SIZE	OVERALL LENGTH "L"			
	Ø"B"	1.5D	2D	3D
700	902		2100	
710c	915		2100	
750	952		2250	
800c	1001		2400	
850	1052		2550	
900c	1098		2700	
950	1152		2850	
1000c	1207		3000	
1100	1302	2200	3300	
1120c	1330	2200	3300	
1200	1402	2400	3600	
1250c	1467	2500	3750	
1400c	1621	2100	2800	
1600c	1793	2400	3200	



UNIT SIZE	WEIGHTS IN KGS			
	1D	1.5D	2D	3D
250c	9	11	13	17
280c	10	12	14	18
300	11	13	15	19
315c	11	13	15	19
350	15	18	21	27
355c	15	18	21	27
400c	18	22	27	36
450c	24	28	35	44
500c	29	35	41	53
550	35	43	50	65
560c	35	43	50	65
600	39	46	54	69
630c	42	50	58	74
650	44	52	61	78
700	50	59	70	90
710c	51	62	72	93
750	54	65	75	96
800c	58	70	82	106
850	63	74	92	121
900c	70	85	100	130
950	79	97	115	151
1000c	95	115	135	175
1100	112	133	154	196
1120c	115	137	160	205
1200	122	146	170	218
1250c	130	155	180	230
1400c	210	315	420	630
1600c	250	370	490	710

NOTES:
 CODE 'O' IS STANDARD SUPPLY.
 FOR HIGH PRESSURE CASING CODE "H". ORDER CODE CDH. (INCREASED CASING THICKNESS TO COMPLY WITH DN144 CLASS C).
 FOR MELINEX INFILL WRAP CODE "M". ORDER CODE CDM.
 CASING:- PRE GALVANISED MILD STEEL TO BS EN10142 1991 FEPOZ97275NA.

Trox (UK) Limited

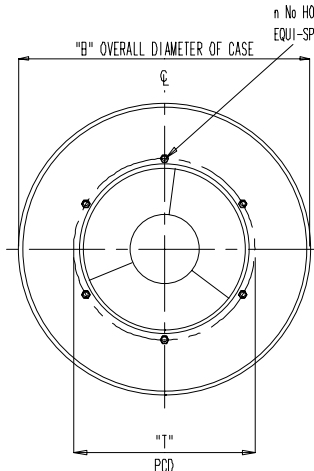
GB-Thetford Norfolk IP24 3SQ
 Telephone 01842/754545
 Telefax: 01842/763051

TROX[®] TECHNIK

Product Information
 CDP CYLINDRICAL ATTENUATOR.

STORIED AS H:\EDD\DATANEW\CDPATTEN All rights reserved © Trox (UK) Limited. Design changes reserved.

FILE NAME H:\EDD\DATANEW\CDPATTEN



UNIT SIZE	"T"	"n"
250c	283	6
280c	317	8
300	329	8
315c	352	8
350	378	8
355c	392	8
400c	438	8
450c	488	8
500c	538	8
550	590	12
560c	600	12
600	640	12
630c	670	12
650	690	12
700	740	12
710c	750	12
750	790	12
800c	840	16
850	890	16
900c	940	16
950	990	16
1000c	1041	16
1100	1150	16
1120c	1169	24
1200	1270	24
1250c	1299	24
1400c	1449	24
1600c	1649	24

STANDARD SIZES SUFFIX 'c'
 ARE DIN 24 154 TEL 1

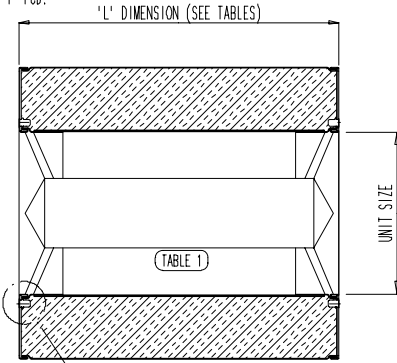


TABLE 1) SINGLE SECTION.

UNIT SIZE	Ø"B"	OVERALL LENGTH "L"
		1D 1.5D 2D 3D
250c	456	250 375 500 750
280c	488	280 420 560 840
300	502	300 450 600 900
315c	522	300 450 600 900
350	552	350 525 700 1050
355c	561	350 525 700 1050
400c	604	400 600 800 1200
450c	653	450 675 900 1350
500c	707	500 750 1000 1500
550	752	550 825 1100 1650
560c	764	550 825 1100 1650
600	802	600 900 1200 1800
630c	838	600 900 1200 1800
650	852	650 975 1300 1950
700	902	700 1050 1400
710c	915	700 1050 1400
750	952	750 1125 1500
800c	1001	800 1200 1600
850	1052	850 1275 1700
900c	1098	900 1350 1800
950	1152	950 1425 1900
1000c	1207	1000 1500 2000
1100	1302	1100 1650
1120c	1330	1100 1650
1200	1402	1200 1800
1250c	1467	1250 1875
1400c	1621	1400
1600c	1793	1600

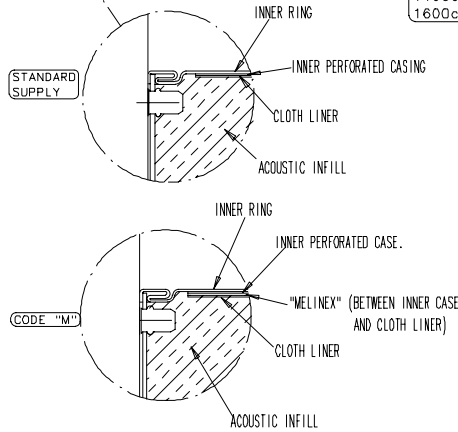
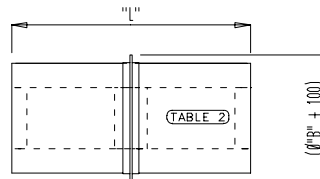
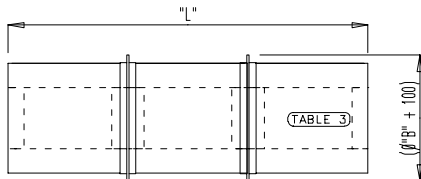


TABLE 2) 2 SECTIONS

UNIT SIZE	Ø"B"	OVERALL LENGTH "L"
		1.5D 2D 3D
700	902	2100
710c	915	2100
750	952	2250
800c	1001	2400
850	1052	2550
900c	1098	2700
950	1152	2850
1000c	1207	3000
1100	1302	2200 3300
1120c	1330	2200 3300
1200	1402	2400 3600
1250c	1467	2500 3750
1400c	1621	2100 2800
1600c	1793	2400 3200

TABLE 3) 3 SECTIONS

UNIT SIZE	Ø"B"	OVERALL LENGTH "L"
		3D
1400c	1621	4200
1600c	1793	4800



UNIT SIZE	WEIGHTS IN KGS
	1D 1.5D 2D 3D
250c	11 14 17 20
280c	12 15 18 22
300	13 16 19 24
315c	16 17 23 30
350	19 22 28 35
355c	20 24 28 35
400c	26 31 36 46
450c	34 38 42 56
500c	41 49 57 73
550	50 60 70 90
560c	50 60 70 90
600	54 65 75 96
630c	58 70 82 98
650	59 72 84 104
700	70 85 98 125
710c	72 86 100 128
750	76 92 108 140
800c	79 95 111 145
850	85 100 121 156
900c	97 114 135 173
950	107 131 155 213
1000c	120 152 185 250
1100	145 180 215 285
1120c	145 180 215 285
1200	150 190 225 300
1250c	165 202 240 315
1400c	270 395 520 670
1600c	320 470 620 920

NOTES:
 CODE 'O' IS STANDARD SUPPLY.
 FOR HIGH PRESSURE CASING CODE "H". ORDER CODE CDPH. (INCREASED CASING THICKNESS TO COMPLY WITH DW144 CLASS C).
 FOR MELINEX INFILL WRAP CODE "M". ORDER CODE CDPM.
 CASING:- PRE-GALVANISED WILD STEEL TO BS EN10142 1991 FEPOZ97275NA.